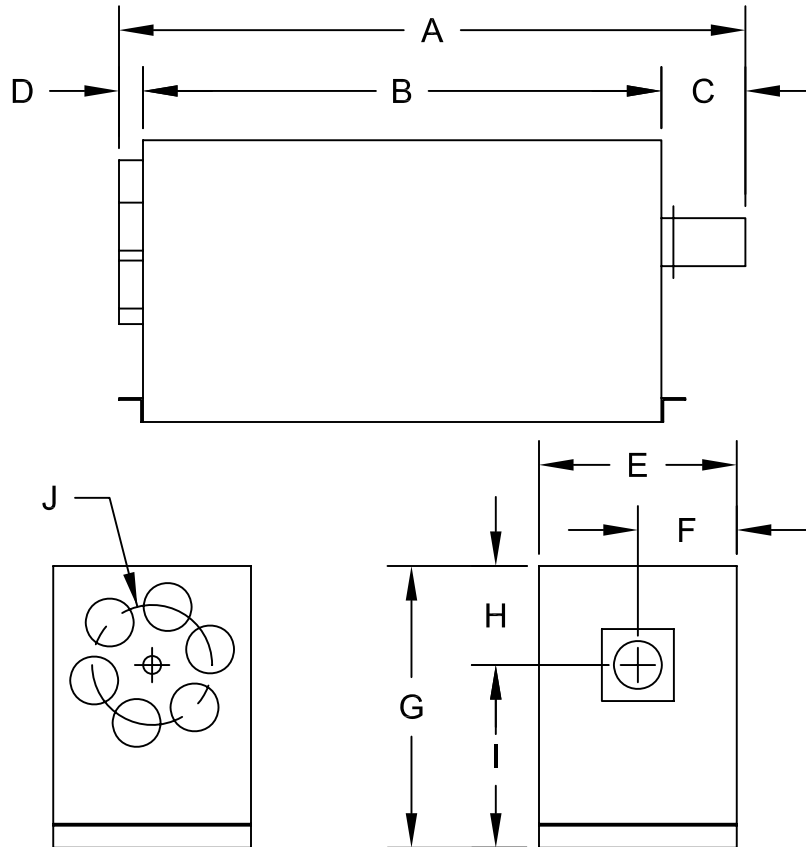


P.T.P.'S SIX POSITION DIVERTER



DIMENSIONS

DIM.	4 IN.	6 IN.
A	52.25	59.75
B	43.25	50.50
C	7.00	6.00
D	2.00	3.25
E	16.50	20.87
F	8.25	10.44
G	23.50	30.00
H	8.62	10.25
I	14.88	19.75
J(RAD)	5.00	6.25

WEIGHT LBS.

185	275
-----	-----

POWER REQUIREMENTS

VOLTS	CYCLES	PHASE	AMP.
115VAC	60HZ	1	3

CONSTRUCTION

CHASSIS (AS SHOWN) 12GA PAINTED C.R.S.
 COVER (AS SHOWN) 16GA PAINTED C.R.S.